

# Poinsettia ornament

*Bead a decorative holiday accent*

by Trude Janofsky



Making beaded flowers has been my hobby for many years. I enjoy the satisfaction of watching people, especially children, react to my work.

I initially designed this poinsettia to be a potted plant. I adapted it so it could be used as either an ornament or a brooch. Both are popular at holiday craft shows.

## stepbystep

The distinctive red or ivory parts of a poinsettia aren't truly the flower; they're actually leaves, called bracts, that form below the small poinsettia flower. For the instructions in this article, however, I refer to the bracts as petals and the collection of bracts as the flower.

### petals and leaves

**1** Transfer 4 strands of red or yellow beads onto 26-gauge wire. Don't cut the wire off the spool.

**2** Begin the small poinsettia petals by sliding  $\frac{3}{8}$  in. (1.6cm) of beads (approx. 8-9 beads) to about  $1\frac{1}{2}$  in. (4cm) from

the wire's end. Bend the tip of the wire to keep the beads from falling off. Hold the base row of beads in place with your thumb and index finger and wrap the wire loosely around your other fingers.

Twist the wire around itself several times just below the base row (**photo a**).

**3** Slide 12-13 beads next to the base row. Bring the working wire up and wrap it around the wire that's coming out of the top of base row. These petals are pointed at the top and bottom, so you'll need to wrap the wire at a sharp angle to form the points (**photo b**).

**4** Slide another 12-13 beads into place and bring the beads down along the other side of the base row. Wrap the working wire around the center wire at a sharp angle, as before (**photo c**).

Repeat this step, adding one or two beads to each row until you have 5 rows. (When you make beaded flowers, always count the rows across the petal or leaf from edge to edge.)

**5** To finish the petal, cut one side of the wire loop at the twist (**photo d**). Straighten out the loop to form a stem

wire. Trim the bent wire tip to  $\frac{3}{8}$  in. (1cm) above the petal and bend it back against the wrong side of the beadwork (**photo e**). Make 4 more small petals.

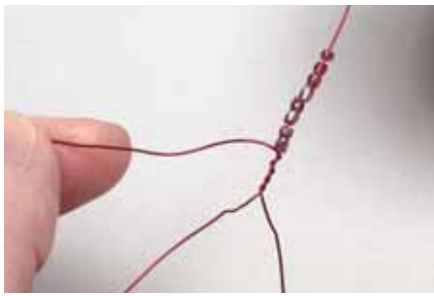
**6** Make the large petals as in steps 2-5, but start with a 1-in. (2.5cm) base row (approx. 15-16 beads). Make 5.

**7** Transfer 2 strands of green beads onto 26-gauge wire. Make the leaves following the directions for the large petals, but work 7 rows across. Make 5.

### materials

- 1 Hank seed beads, size 9<sup>o</sup> or 10<sup>o</sup> 3-cuts, luster red or light yellow
- 1 Hank seed beads, size 9<sup>o</sup> or 10<sup>o</sup> 3-cuts, luster green
- 6-7 3mm gold beads
- 1 Spool 26-gauge craft wire (or 1 spool to match petal color and 1 to match leaf color)
- 1 Spool 28-gauge gold craft wire
- 1 yd. (.9m) 34-gauge Craft wire (optional)
- Green floral tape
- $\frac{1}{2}$  yd. (45cm)  $\frac{1}{4}$ - $\frac{3}{8}$  in.-wide (.6-1cm) Ribbon

**Tools:** chainnose pliers, wire cutters



a



b



c



d



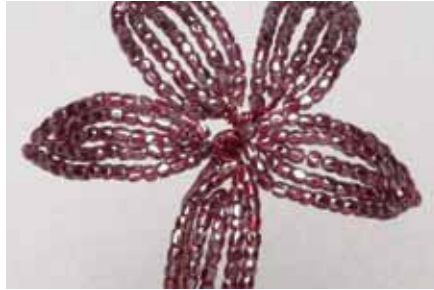
e



f



g



h



i



j



k



l

### center

**1** String six 3mm gold beads on 28-gauge wire. Slide one bead to 3 in. (7.6cm) from the cut end, hold the bead, and twist the 2 wires together a few times against the bead (**photo f**). Keep the twists close together.

**2** Slide another bead about an inch from the twist. Hold the bead and twist the wires as in step 1. Repeat with the remaining 5 beads.

**3** Coil the beads into a spiral and cut the wire from the spool, leaving a 3-in. tail beyond the last twist (**photo g**).

### assembly

**1** Stack the 5 small petals right-side up. Twist their stem wires together for about  $\frac{5}{8}$  in., working close to the beads.

**2** Arrange the petals so they radiate from the center into a circle. Keep their right-sides facing upwards (**photo h**).

**3** Insert the coiled gold beads into the center of the petals and wrap the gold wire around the petal stems to keep it in place (**photo i**).

**4** Place the large petals behind and



m



n

between the small petals one at a time, wrapping each wire around the stem. If you have 34-gauge wire, wrap it around the assembled stems several times to keep them in place (**photo j**).

**5** Add the leaves behind and between the large petals, wrapping the wires around the stem as before (**photo k**).

**6** Trim the stem wires to  $2\frac{1}{4}$  in. (6cm), cutting them at a slight angle across the bottom. Twist the wires tightly together using pliers (**photo l**).

**7** Cut the end of the floral tape at an angle and place it against the stem at the base of the beads. Stretch the tape slightly as you wrap so the tape will adhere to itself (**photo m**).

**8** Shape each petal and each leaf individually by lifting slightly at the center and pushing down on the tip to curve it.

**9** Cover the floral tape with ribbon and curl the stem into a coil (**photo n**). Dab the ribbon's end with glue to keep it from unraveling. Add a bow, if desired.

**10** To use the flower as an ornament, run an 8-in. (20cm) length of thin ribbon or decorative cord through the beads or one of the leaves. Knot the ends. ●

*Trude can be reached at 7578 Regency Lake Drive, Boca Raton, FL 33433; (561) 395-5196.*