



READY-TO-WEAR HARDWARE



While we're past considering hardware stores a male stronghold, we probably don't really think of them as our beading muses, either. The following projects may change this perception. With primary materials — washers, O-rings, nylon cord, rubber tubing, and window film — straight off the home-improvement shelves, the *BeadStyle* staff designed jewelry pieces that are fun and fashionable, but not campy. Only you will know they didn't come from a boutique.



Light Effects window film and O-ring necklace and earrings



Washer bracelet



Rainbow twine / nylon cord bangles



Rubber washer and O-ring necklace



1 a Open a 10mm jump ring (Basics, p. 110). Attach a 6mm washer and a 5mm washer. Close the jump ring. Use a jump ring to attach the 5mm washer to another 6mm washer. Make a total of four units.

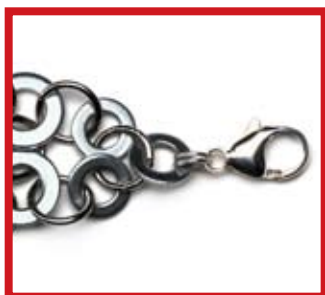
1 b Attach a 5mm washer to a 6mm washer. Attach the 6mm washer to another 5mm washer. Make a total of three units.



2 Arrange washer units in a row, alternating the two types. Begin and end with units that have a 5mm washer in the middle. Use jump rings to attach the washers in one unit to the respective washers in the next unit until all units are connected. Check the fit, allowing 3½ in. (8.9cm) for finishing. Add or remove units if necessary.



3 Use a jump ring to attach two 6mm washers. Repeat. Using three jump rings, attach each 6mm unit (including the jump ring) to the respective washers on each side.



4 Use a jump ring to attach two 5mm washers. Repeat. Attach each unit (excluding the jump ring) to the respective washers on each side. Attach a 5mm washer to each remaining jump ring.

On each end, attach a split ring to the 5mm washer (Basics). On one end, attach a lobster claw clasp to the split ring. ❖



designed by Lindsay Haedt

SupplyList

- 11–17 6mm washers
- 13–19 5mm washers
- 36–56 10mm jump rings
- 2 6–8mm split rings
- lobster claw clasp
- chainnose and roundnose pliers, or 2 pairs chainnose pliers
- split-ring pliers (optional)

SUPPLY NOTE

At home-improvement stores, washers are measured by their inside diameters. The 5mm and 6mm washers have 10mm and 12mm outside diameters, respectively.

